

RESOLUTION

Gadsden Independent School District

BLM Land School Site Lease – NMNM 086764.01

BE IT RESOLVED, that the Gadsden Independent School District adopt and extend the attached April 11, 1991 executed resolution for a future middle school on the BLM School Site Lease – NMNM 0867640.01 within the control of the Gadsden Independent School District in Doña Ana County, New Mexico.

Jennifer Viramontes, School Board President

Date

GADSDEN INDEPENDENT SCHOOL DISTRICT

RESOLUTION

WHEREAS, The Gadsden Independent School District Board of Education bears the responsibility for maximizing the financial resources available; and

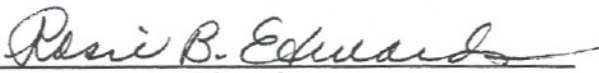
WHEREAS, The Gadsden Independent School District is in fact one of the fastest growing school districts in the State of New Mexico; and

WHEREAS, The Gadsden Independent School District Facilities Master Plan identifies the Anthony sub-district as an area of particularly rapid population growth;

BE IT RESOLVED, that the Gadsden Independent School District Board of Education adopt a position which recognizes the imperative need to set aside public lands for public school use; and

BE IT FURTHER RESOLVED, that the Gadsden Independent School District Board of Education enter into a Memorandum of Understanding with the Bureau of Land Management to set aside certain public lands for future public school use.

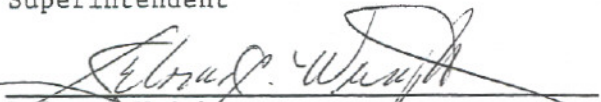
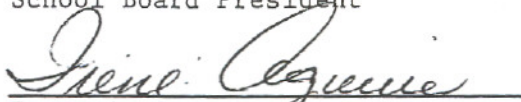
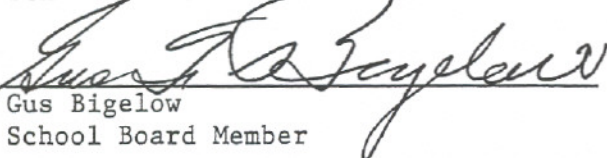
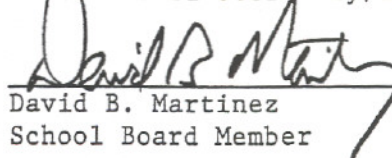
EXECUTED THIS DAY OF APRIL 11, 1991 AT ANTHONY, DONA ANA COUNTY, NEW MEXICO.

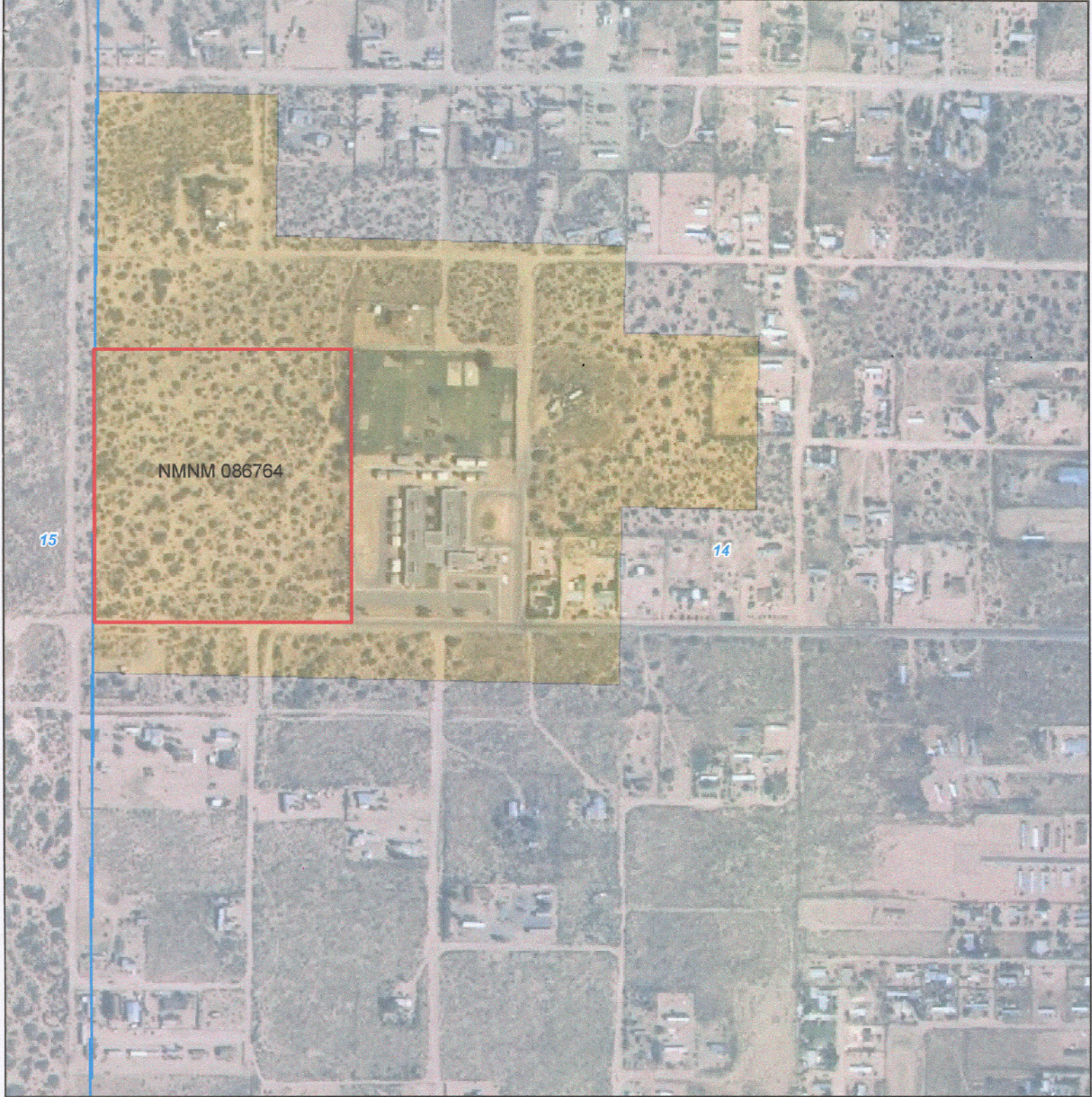


Dr. Rosie B. Edwards
Superintendent



Dona Stout
School Board President


Delores Wright
School Board Vice-President
Irene Aguirre
School Board Secretary/Treasurer
Gus Bigelow
School Board Member
David B. Martinez
School Board Member






TOWNSHIP 26 SOUTH, RANGE 3 EAST, SEC. 14, LOTS 53-58, 75-77

Legend

 School Site NMNM 086764

Surface Ownership

-  Bureau of Land Management
-  Private
-  State

No Warranty is made by the Bureau of Land Management of these data for individual use or aggregate use of BLM. Spatial information is provided as a general guide and is subject to change without notification.

7/29/09

